



BARRA HALL



WELCOME TO BARRA HALL

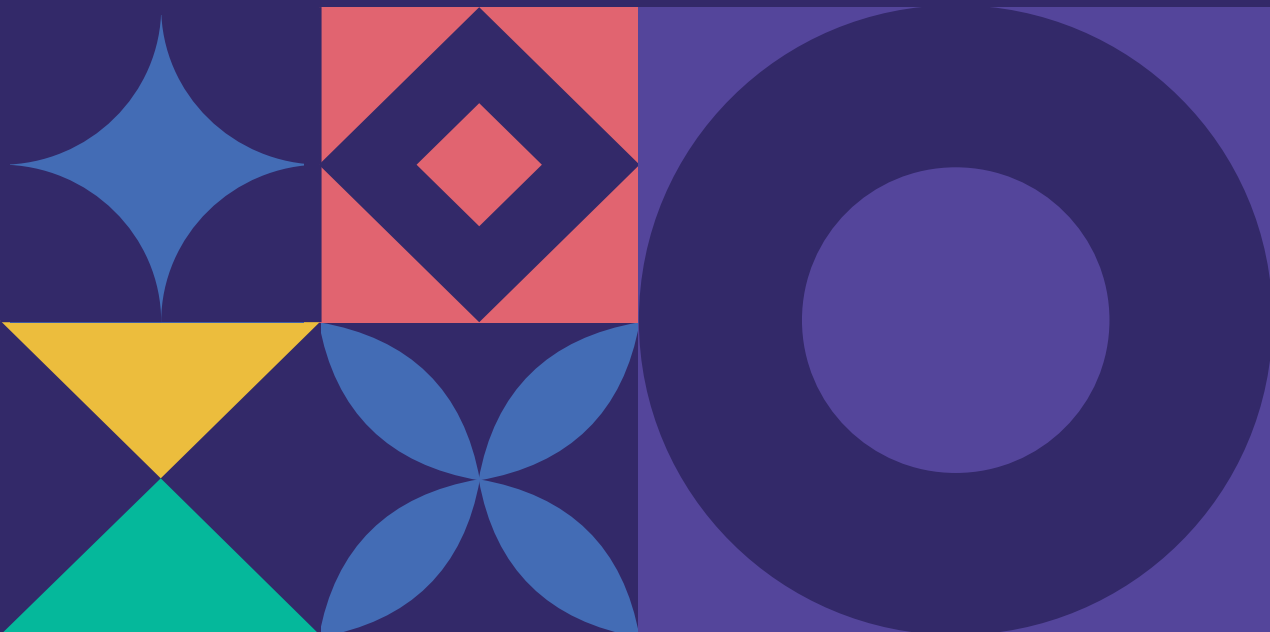
Welcome to our new SEND centre at Barra Hall. This exciting development marks a major milestone in strengthening our support for learners with Special Educational Needs and Disabilities.

The transformation of this much-loved Hayes landmark will enable HRUC to provide a high-quality, inclusive learning environment for students across Hillingdon, Hayes, Uxbridge and neighbouring boroughs.

Barra Hall will expand our capacity and enhance the personalised supported curriculum we offer, helping each young person progress with confidence.

Our commitment remains to prepare learners for adulthood and independence, create clear pathways into further HRUC programmes and/or further employment where appropriate, and empower students to play active, meaningful roles in their communities.

Located against the backdrop of Barra Hall Park, the centre will do more than welcome an ambitious group of students. We look forward to Barra Hall thriving as a vibrant hub of support, nurturing, and achievement for the local community.

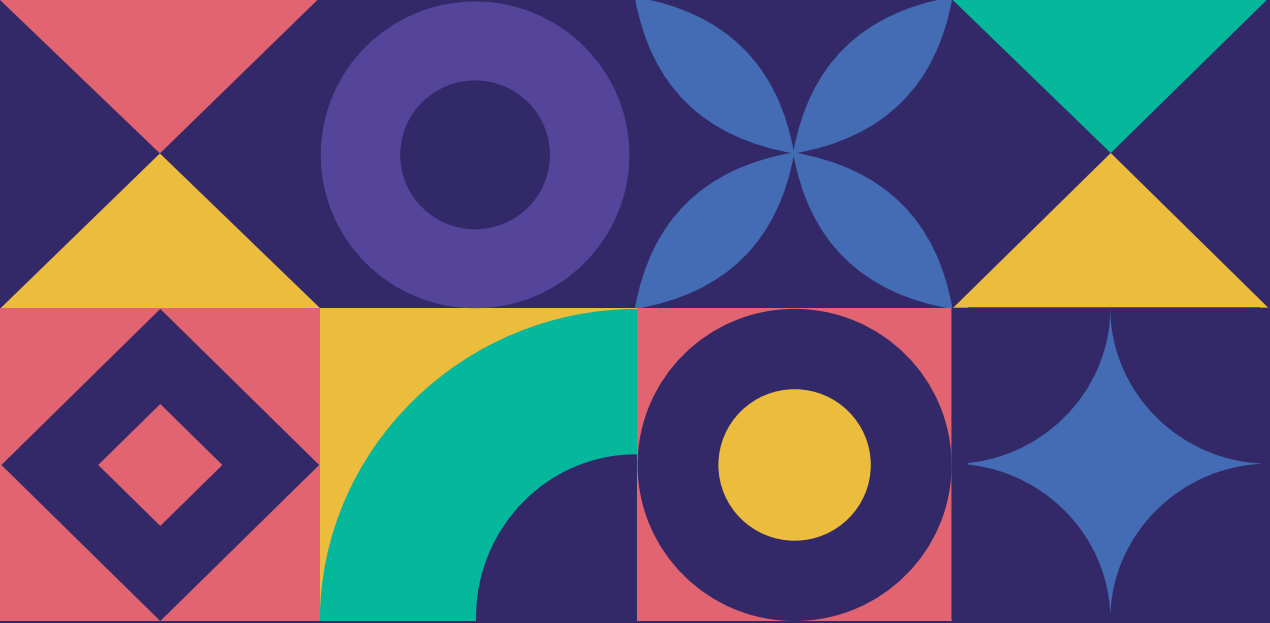


BARRA HALL - OUR NEW SPECIAL EDUCATIONAL NEEDS CENTRE

The strategic decision to purchase Barra Hall in Hayes from Hillingdon Council is driven by a commitment to putting students at the heart of everything we do. Barra Hall will enable us to strengthen the

quality of our educational services, provide a high-quality inclusive learning environment, and improve outcomes for students with special educational needs (SEN).





HIGH NEEDS LEARNING AT HRUC CURRENT AND FUTURE PROVISION

SLD / PMLD SUPPORT SPECIALIST, INCLUSIVE AND IMPACTFUL

Harrow, Richmond and Uxbridge College (HRUC) is proud to deliver a brand-new, purpose-built provision supporting learners from Pre-Entry to Level 1, focusing on SLD-MLD (severe-moderate learning difficulties) learners. Our facility combines therapeutic, vocational, and academic pathways to deliver positive EHCP (education, care, and health plan) outcomes and model inclusive, high-impact learning environments.



KEY FEATURES:

- ◆ Designed to meet diverse learning and care needs
- ◆ Focus on progression, independence, and preparation for adulthood
- ◆ Seamless integration of therapeutic and vocational learning.

CURRICULUM AND SUPPORT FOR LEARNERS

EVERY LEARNER FOLLOWS A PERSONALISED PROGRAMME ALIGNED WITH THEIR EHCP OUTCOMES AND LONG-TERM GOALS.



CORE CURRICULUM PATHWAYS:

- ◆ Independence and Life Skills
- ◆ Employability and Preparation for Adulthood
- ◆ Academic Progression
- ◆ Total Communication & Sensory Learning.



SPECIALIST SUPPORT AND FACILITIES:

- Purpose-built classrooms for Digital Skills and Creative Learning
- On-site therapies (MDT), mentoring and pastoral care
- Specialist Medical Lead and Personal & Medical Care suites
- High ratios of specialist support staff linked to individual provision maps.

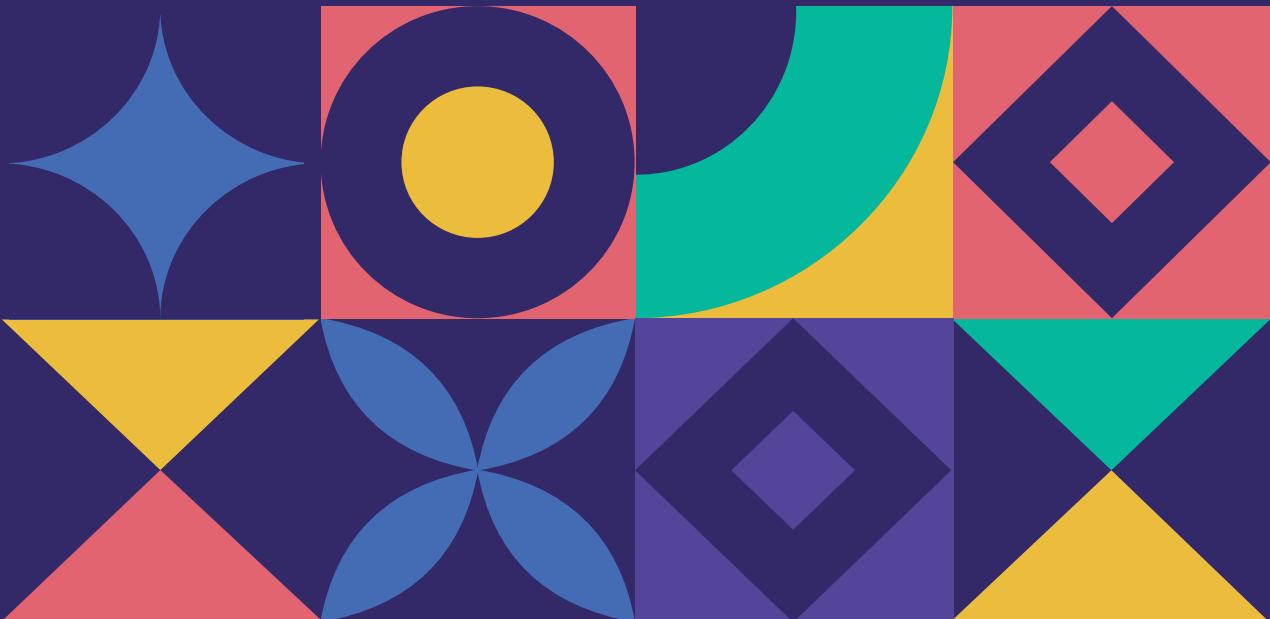




FACILITIES AND PARTNERSHIPS

OUR NEW CENTRE PROVIDES MODERN, ACCESSIBLE LEARNING ENVIRONMENTS DESIGNED TO REMOVE BARRIERS AND MAXIMISE OUTCOMES.

- ◆ Accessible classrooms and sensory spaces
- ◆ Training kitchen to embed independent living and employability skills
- ◆ Partnerships with Heathrow, IoT, and a wide employer network
- ◆ Staff trained in SLD–MLD pedagogy and assistive technology
- ◆ Operating as the SEND Hub for West London – nurturing confidence, independence, and progression.





Harrow
COLLEGE



peas

HARROW COLLEGE - ESTABLISHED SEND EXCELLENCE

Harrow College has a long-standing reputation for SEND excellence, supporting learners with PMLD through to mild learning needs.

Our Strengths:

- ◆ Proven track record in progression and independence outcomes
- ◆ Therapeutic, community and life-skills-focused learning
- ◆ Strong local partnerships and community links
- ◆ Experienced specialist staff committed to inclusion.



Harrow College
Established SEND
Excellence



BARRA HALL - VISION AND OFFER

Barra Hall will serve as a therapeutic base for complex-needs learners, extending HRUC's inclusive provision ensuring continuity of learning and care.

The Offer:

- ◆ Focus on digital assistive technology, sensory therapies, and wellbeing spaces
- ◆ High staff-to-student ratios
- ◆ Clear pathways into supported internships, employability and volunteering
- ◆ Acts as a staff CPD and innovation centre for inclusive practice
- ◆ The modernised space will open from September 2026.





FUTURE ALIGNMENT & GROWTH

Barra Hall completes HRUC's SEND footprint across West London, directly addressing identified gaps in the Local Offer and strengthening collaborative partnerships.



STRATEGIC BENEFITS:

- ◆ Builds on the established success of Harrow and Uxbridge Colleges
- ◆ Strengthens partnerships with Local Authorities, employers, and community organisations
- ◆ Positions HRUC as the College of Choice for SEND learners across the region.

BARRA HALL - CURRICULUM AND SUPPORT

An integrated hub for learners with SLD, PMLD, and higher-level progression pathways (E3–L1). Programmes are designed to combine therapeutic learning, community engagement, and supported transitions to adulthood.

Curriculum Offer:

- ◆ Pre-Entry to Level 1 pathways
- ◆ Independence, Life Skills, Adulthood, Social Relations, Work & Employability, Academic Progression
- ◆ Pre-SI/SI Internships and community participation routes
- ◆ On-site therapies (MDT), mentoring, and pastoral care
- ◆ Specialist teaching rooms for Digital Skills, Creative Learning, and Training Kitchen
- ◆ Polytunnel and community projects supporting work experience
- ◆ Specialist Medical Lead and high ratios of skilled support staff.







EMPOWERING LEARNERS & STRENGTHENING COMMUNITIES

HRUC's vision is to deliver inclusive, future-focused learning that:

- ◆ Meets and exceeds EHCP outcomes
- ◆ Builds confidence, independence, and employability
- ◆ Supports local authority priorities for inclusion, progression, and preparation for adulthood
- ◆ Strengthens regional collaboration and pathways across education, health, and social care.

1,042

High needs SEND learners attend HRUC



CONTACT US



BARRA HALL,
WOOD END GREEN ROAD,
HAYES, MIDDLESEX.
UB3 2NH



E-MAIL:
LEARNINGSUPPORT@UXBRIDGECOLLEGE.AC.UK



WEBSITE:
HRUC.AC.UK/ABOUT-US/BARRA-HALL





HRUC
HARROW, RICHMOND & UXBRIDGE COLLEGES

Harrow
COLLEGE



Richmond upon
Thames College

UXBRIDGE
COLLEGE